

PERFORMANCE

Processor

Intel® Core™ i5-12450H, 8C (4P + 4E) / 12T, P-core 2.0 / 4.4GHz, E-core 1.5 / 3.3GHz, 12MB

Graphics

Integrated Intel® UHD Graphics

Chipset

Intel® SoC Platform

Memory

8GB Soldered LPDDR5-4800

Memory Slots

Memory soldered to systemboard, no slots, single-channel (8GB models)

Max Memory

8GB soldered memory, not upgradable

Storage

512GB SSD M.2 2242 PCIe® 4.0x4 NVMe®

Storage Support^[1]

One drive, up to 1TB M.2 2242 SSD

Storage Slot

One M.2 PCIe® 4.0 x4 slot

Card Reader

SD Card Reader

Optical

None

Audio Chip

High Definition (HD) Audio

Speakers

User-facing stereo speakers, 1.5W x2, optimized with Dolby Audio™

Camera

HD 720p with Privacy Shutter

Microphone

2x, Array

Battery

Integrated 47Wh

Power Adapter

65W Round Tip (3-pin)

DESIGN

Display

15.6" FHD (1920x1080) TN 250nits Anti-glare

Touchscreen

None

Keyboard

Backlit, English

Touchpad

Buttonless Mylar® surface multi-touch touchpad, supports Precision TouchPad (PTP), 69 x 104 mm (2.72 x 4.09 inches)

Case Color

Arctic Grey

Surface Treatment

IMR (In-Mold Decoration by Roller)

Case Material

PC-ABS (Top), PC-ABS (Bottom)

Dimensions (WxDxH)^[2]

359.3 x 235 x 17.9 mm (14.15 x 9.25 x 0.70 inches)

Weight^[3]

Starting at 1.62 kg (3.57 lbs)

SOFTWARE

Operating System

Windows® 11 Pro, English

Bundled Software

Office Trial

CONNECTIVITY

Ethernet

No Onboard Ethernet

WLAN + Bluetooth®

Wi-Fi® 6, 11ax 2x2 + BT5.2

Standard Ports

- 2x USB 3.2 Gen 1
- 1x USB-C® 3.2 Gen 1 (support data transfer, Power Delivery and DisplayPort™ 1.2)
- 1x HDMI® 1.4
- 1x Headphone / microphone combo jack (3.5mm)
- 1x Card reader
- 1x Power connector

Docking

Various docking solutions supported via USB-C®.

For more compatible docking solutions, please visit [Docking for IdeaPad® Slim 3 15IAH8](#)

SECURITY & PRIVACY

Security Chip

Firmware TPM 2.0 Enabled

Fingerprint Reader

Touch Style, Integrated in Power Button

Other Security

Camera privacy shutter

SERVICE

Base Warranty

1-year, Courier or Carry-in

Included Upgrade

3Y Courier/Carry-in upgrade from 1Y Courier/Carry-in

ACCESSORIES

Bundled Accessories

None

CERTIFICATIONS

Green Certifications^[4]

- ENERGY STAR® 8.0
- EPEAT™ Silver Registered
- ErP Lot 6
- ErP Lot 26
- RoHS compliant

Other Certifications

TÜV Rheinland® Low Blue Light (Software Solution)

Mil-Spec Test

MIL-STD-810H military test passed (21 test items)

MODEL

TopSeller	: No	Announce Date	: 2023-12-13
EAN / UPC / JAN	: 197530003295	End of Support	: 2029-07-26



Product image is a sample, it may not match the real color of this model

Note:

^[1] The storage capacity supported is based on the test.....

· Lenovo reserves the right to change specifications without notice.

To see more note information, please link to

<https://psref.lenovo.com/Detail/2356?M=83ER00B6SA>

Premium Care - Advanced Support from Real People. Real Fast.



REAL PERSON

Choose how you want to reach us - through the phone, chat or email - our expert technicians will take care of you.



REAL FAST

Highly trained technicians will provide you real-time solutions, whatever the issue, on your first contact. If needed, our team will schedule an onsite visit for the next business day.



HASSLE FREE

'Getting started' and 'how-to' assistance for hardware and software. Easy solutions that are simple to reach - that's how Premium Care delivers you the ideal support experience.



PC HEALTH CHECK

Free annual PC Health Check that allows our experts to spot issues before you do so they can resolve them quickly and help you avoid PC problems.

Accidental Damage Protection - Protection of your PC from the unexpected.

Experience shows that a significant portion of devices may be damaged (and not covered under warranty) in the first three years. Lenovo's Accidental Damage Protection service covers accidents beyond the system warranty such as drops, spills, bumps and even electrical surges. Make sure your new device has maximum protection, avoid unplanned costs and get peace of mind.

Base Warranty – Included with the systems you purchase, default 1- or 3-year coverage window.

Warranty Extensions & Upgrades – Service and protection that's right for your circumstances.

- Pick Up & Return Courier
- Onsite Support
- Technician Installed Customer
- Replaceable Unit Service
- International Warranty Upgrade

Lenovo may not offer the products, services or features discussed in this document in all regions. Lenovo may withdraw an offering at any time. Consult your local representative for information on offerings available in your area. Lenovo reserves the right to change specifications or other product information without notice. Lenovo is not responsible for photographic or typographical errors. Lenovo provides this publication "as is" without warranty of any kind, either express or implied, including the implied warranties of merchantability or fitness for a particular purpose.

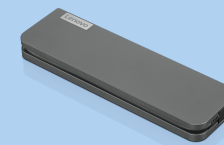
Recommended Accessories



Lenovo Y25-30 24.5inch Monitor

66FOGACBUS

Smooth, fast, and dynamic - the Lenovo Legion Y25-30 monitor is power-packed to elevate your gaming experience to a whole new level. Keeping every individual's comfort in mind, this large 24.5-inch FHD (1920 x 1080) s...



Lenovo USB-C Mini Dock_US

40AU0065US

Expand Your Potential with An Universal Mini Dock; Lenovo understands that modern business depends on a wide variety of PC's and even brands to meet their business needs. To make this easier Lenovo USB-C Mini dock is ...

For a full list of accessories and services, please visit:
<https://smartfind.Lenovo.com>

Lenovo

PSREF
Product Specifications
Reference