

PERFORMANCE

Processor

Qualcomm® Snapdragon™ SDM680 (8C, 4x A73 @2.4 GHz + 4x A53@1.9 GHz)

Graphics

Integrated Qualcomm Adreno™ 610 GPU

Chipset

Qualcomm SoC Platform

Memory

4GB Soldered LPDDR4x

Storage

128GB UFS 2.2 (uMCP)

Expandable Memory

microSD Card (up to 1TB)

Card Reader

Nano-SIM & microSD Card Slot

Storage Support

- 128GB uMCP (UFS-Based MCP, UFS 2.2)
- microSD card, supports up to 1TB

Speakers

4 speakers, 1W x4, optimized with Dolby® Atmos®

Microphone

Mono

Camera

Front 8.0MP / Rear 8.0MP

VoiceCall^[1]

Voice Call

Sensors

- Accelerometer (G) sensor
- Ambient light sensor (ALS)
- Gyroscope sensor
- Hall sensor

Vibration Motor

Eccentric Rotating Mass (ERM)

Battery

Integrated 7500mAh (Min.) / 7700mAh (Typ.)

Power Adapter

5V / 2A

DESIGN

Display^[2]

10.61" 2K (2000x1200) IPS 400nits Anti-fingerprint, 72% NTSC, 60Hz, Touch

Touchscreen

10-point Multi-touch

Case Material

PC + Metal

Pen

Lenovo® Precision Pen 2

Dimensions (WxDxH)^[3]

251.2 x 158.8 x 7.45 mm (9.89 x 6.25 x 0.29 inches)

Weight^[4]

Around 465 g (1.03 lbs)

Case Color

Storm Grey

SOFTWARE

Operating System^[5]

Android™ 12 or Later

CONNECTIVITY

WLAN + Bluetooth®

11ac 1x1 + BT5.1

WWAN

4G LTE

SIM Card

None

Location Services

GPS + GLONASS + Galileo + Beidou + A-GPS

Standard Ports

- 1x Card slot
- 1x Headphone / microphone combo jack (3.5mm)
- 1x USB-C® 2.0 (support data transfer and charging)

SERVICE

Base Warranty^[6]

1-year, Carry-in with 1-year Battery

ACCESSORIES

Bundled Accessories

Folio Case

CERTIFICATIONS

Green Certifications

- ErP Lot 3
- RoHS compliant

Other Certifications

TÜV Rheinland® Low Blue Light (Hardware Solution)

MODEL

Product : TB128XU

TopSeller : No

Announce Date : 2022-06-21

EAN / UPC / JAN : 196379801628



Product image is a sample, it may not match the real color of this model
Note:

[1] Use of Voice call requires cellular data plan. Voice call functionality details may vary based on local operator network, data and messaging services. Please contact your carriers for details.

[2] IPS (in-plane switching) technology may refer to IPS, PLS, ADS, AHVA, AAS.

[3] The system dimensions may vary depending on configurations.

[4] The system weight is approximate and based on results in Lenovo lab, which varies depending on the source of component, variance of the distribution of each component, and manufacturing process. It may not be the exact weight for each specific model.

[5] For latest operating system and security patches deliver plan, please visit

<https://support.lenovo.com/solutions/ht501098>.

[6] For warranty upgrade service, please go to <https://smartfind.lenovo.com/services>. To learn more details of warranty policy, please access <https://pcsupport.lenovo.com/warranty>.

• Lenovo reserves the right to change specifications without notice.

To see more note information, please link to <https://psref.lenovo.com/Detail/1933?M=ZAAN0053ZA>

Premium Care - Advanced Support from Real People. Real Fast.



REAL PERSON

Choose how you want to reach us – through phone, chat, or email – our expert technicians will take care of your device issues.



REAL FAST

Highly trained technicians will provide you real-time solutions, whatever the issue, on your first contact. If the issue can't be solved remotely, our team will schedule a repair via depot / carry-in support to resolve your issue.



HASSLE FREE

'Getting started' and 'how-to' assistance for hardware and software. Easy solutions that are simple to reach – that's how Premium Care delivers you the ideal support experience.

Accidental Damage Protection One - Protection for your Tablet from the unexpected.

Avoid the hassles of unexpected damage & repair costs. With coverage for drops, spills, electric surges, and broken LCD screens, accidental damage protection makes it easy to repair to your Tablets, permitting a single repair during the coverage period.

Base Warranty - Included with the system you purchase with default 1-year coverage window.

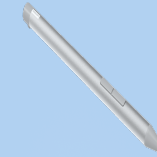
Lenovo Warranty Extensions & Upgrades (up to 3 years duration) - Gain complete peace of mind by extending your base warranty to up to 3 years and minimize unexpected repair costs.

- Pick up & return courier / Depot support
- Replaceable unit service*

*Applicable in some regions only. Please check with your local services team for more details.

Lenovo may not offer the products, services or features discussed in this document in all regions. Lenovo may withdraw an offering at any time. Consult your local representative for information on offerings available in your area. Lenovo reserves the right to change specifications or other product information without notice. Lenovo is not responsible for photographic or typographical errors. Lenovo provides this publication "as is" without warranty of any kind, either express or implied, including the implied warranties of merchantability or fitness for a particular purpose.

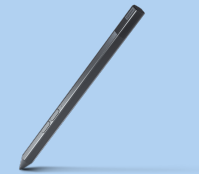
Recommended Accessories



Lenovo Active Pen 3 (2023)

ZG38C04479

With 4,096 levels of pressure and tilt detection, the Lenovo Active Pen 3 (2023) affords users the highest level of precision and control as they sketch or just take notes.



Lenovo Precision Pen 2(US)

ZG38C03380

With 4,096 levels of pressure and tilt detection, the Lenovo Precision Pen 2 affords users the highest level of precision and control as they sketch or just take notes. With up to 100 hours usage*, write or draw all d...

For a full list of accessories and services, please visit:
<https://smartfind.Lenovo.com>

Lenovo

PSREF
Product Specifications
Reference