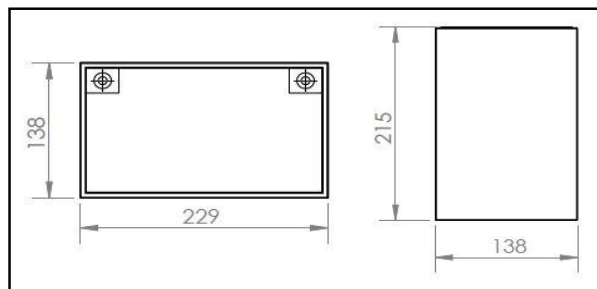
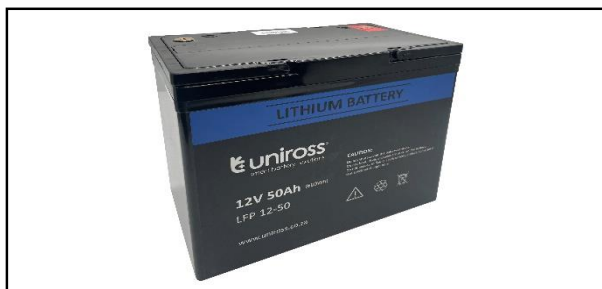


## LFP12-50 (12.8V - 50Ah)

## Physical Dimensions



<b>Electrical Characteristics</b>	Nominal Voltage	12.8V
	Nominal Capacity	50Ah
	Energy	640Wh
	Internal Resistance	≤150mΩ
	Cycle Life	>2000 cycles at 0.2C 90% DOD
	Months Self Discharge	<3%
<b>Charge</b>	Charge Voltage	14.4+/-0.2V
	Charge Mode	CC at 0.2C to 14.4V, CV14.6V stop current = 0.02C
	Charge Current	10A
	Max. Charge Current	50A
	Charge cut-off voltage	15.6V+/-0.2V
<b>Discharge</b>	Max. Continuous Current	50A
	Max. Pulse Current	50A
	Discharge cut-off Voltage	8V
<b>Environment</b>	Charge Temperature	0°C to 45°C at 60±25% Relative Humidity
	Discharge Temperature	- 20°C to 60°C at 60±25% Relative Humidity
	Storage Temperature	0°C to 40°C 60±25% Relative Humidity
	Ingress Protection	IP56
<b>Mechanical</b>	Cell Material	LiFePO4
	Plastic Case Material	ABS
	Dimensions (mm)	229*138*215mm
	Weight (Kg)	6KG
	Terminal	M6
<b>BMS</b>	Protection Function	Over charge, Over discharge, Over current, Short Circuit, Cell Balancing function, Temperature protection

## Discharge Characteristics

